

## Mixed flow fans

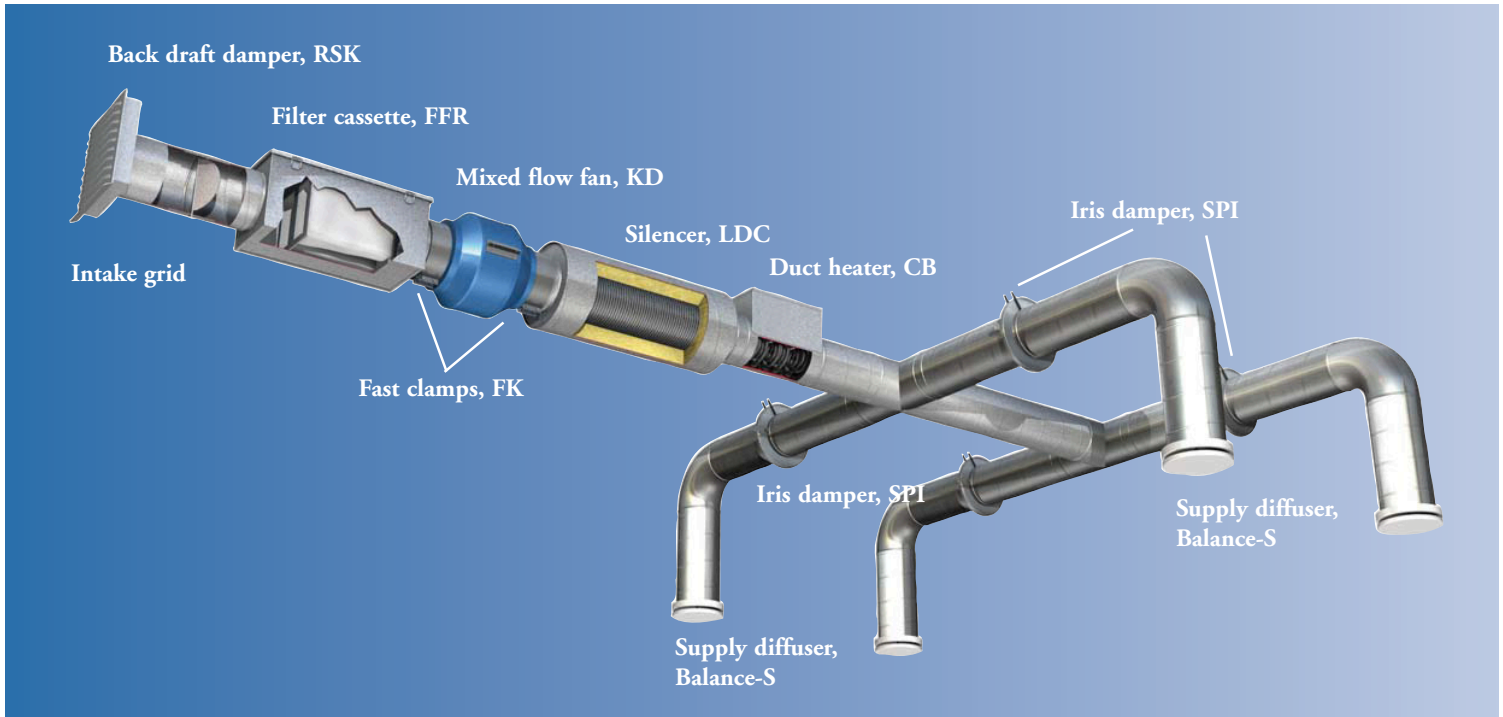
### KD

- High efficiency – low noise
- Speed-controllable
- Integral thermal contacts
- Can be installed in any position
- Maintenance-free and reliable

The KD series have external rotor motors with a new type of mixed flow impeller which reduces the external dimensions of the fans. These fans have a high capacity in relation to their compact design.

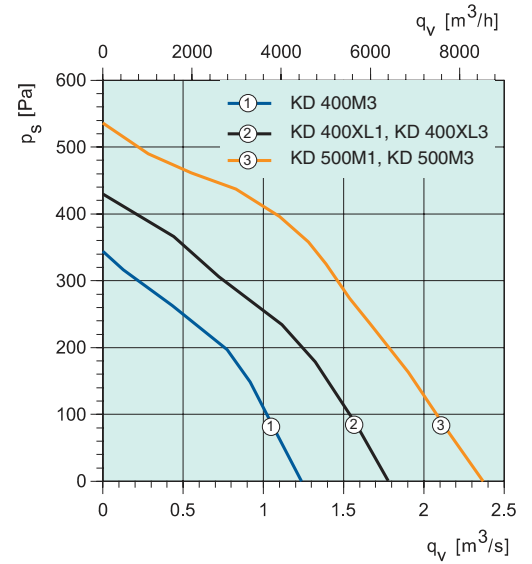
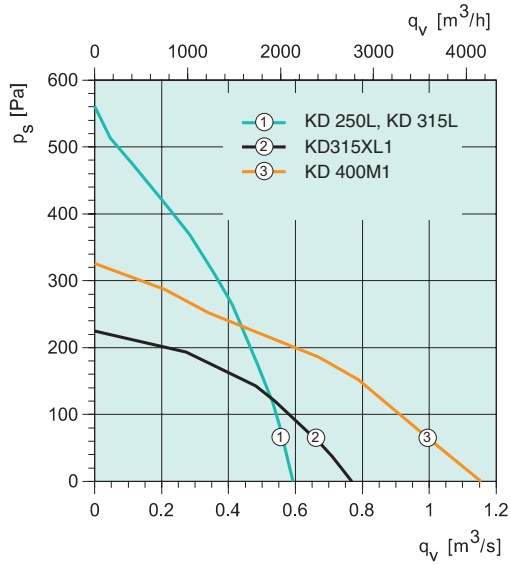
Brackets are supplied with the fans to make installation easier. The FK mounting clamp facilitates easy installation and removal and prevents the transfer of vibrations to the duct.

To protect the motor from overheating the KD fans have integral thermal contacts with electrical reset. The casing is manufactured from powder-coated galvanised sheet steel.

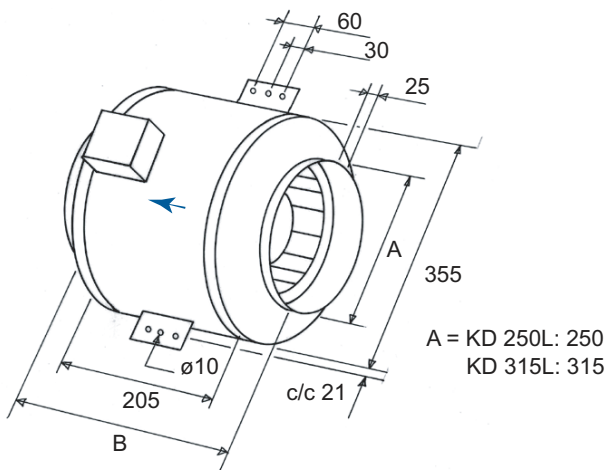


KD		250L	315L	315XLI	400MI	400M3	400XLI	400XL3	500MI	500M3
Voltage/Frequency	V/50 Hz	230~	230~	230~	230~	400 3~	230~	400 3~	230~	400 3~
Power	W	370	372	275	457	475	893	861	1385	1267
Current	A	1.61	1.62	1.29	2.03	0.93	4.30	1.60	6.10	2.23
Maximum air flow	m <sup>3</sup> /h	1985	2135	2765	4160	4470	6155	6400	8530	8440
R.p.m	min <sup>-1</sup>	2595	2590	1375	1310	1390	1270	1325	1290	1330
Max temp. of transported air	°C	70	70	70	70	70	45	55	40	60
Sound pressure level at 3 m*	dB(A)	55	53	52	53	54	58	57	64	60
Weight	kg	10	9	16	21	19	32	29	42	39
Enclosure class, motor	IP	44	44	54	54	54	54	54	54	54
Capacitor	µF	10	10	6	10	-	16	-	30	-

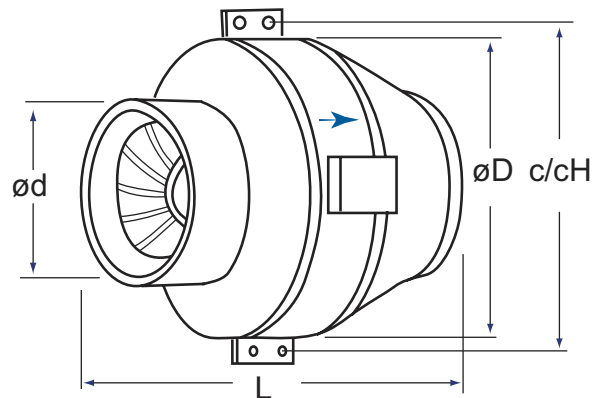
\*  $L_{wA} - 7 \text{ dB(A)} = L_{pA}$  at 20 m<sup>2</sup> Sabine and 3 m distance to the fan. ( $L_{wA}$  = Sound power level,  $L_{pA}$  = Sound pressure level)



**KD 250L-315L**



**KD 315XL1-500M3**



KD	ød	L	øD	c/cH
315XL1	315	484	455	518
400M1/M3	400	480	503	568
400XL1/XL3	400	602	560	625
500M1/M3	500	643	663	721

**Speed controllers**

	Transformer	Thyristor	Motor protection
KD 250L	RE 3/REU 3	REE 2	*
KD 315L	RE 3/REU 3	REE 2	*
KD 315XL1	RTRE 3/REU 3	REE 2	S-ET 10
KD 400M1	RTRE 3/REU 3	REE 4	S-ET 10
KD 400M3	RTRD 2/RTRDU 2	-	STDT 16
KD 400XL1	RTRE 5/REU 5	REE 4	S-ET 10
KD 400XL3	RTRD 2/RTRDU 2	-	STDT 16
KD 500M1	RTRE 7/REU 7	-	S-ET 10
KD 500M3	RTRD 4/RTRDU 4	-	STDT 16

\* No need for external motor protection.  
Other accessories, page 50.