

TFER

- Speed-controllable
- Easy to install
- Maintenance-free and reliable

The TFER models are fitted with a single-inlet centrifugal fan with backward-curved blades and external rotor motors. The TFER range consists of circular roof fans manufactured in powder-coated, galvanised sheet steel, in the standard colours of black or brick red. These fans are supplied with a cable and plug for fast connection to the mains via the connection box on the roof curb TOB or TOS. The clips simplify the connection of the unit to the frame or the roof curb.

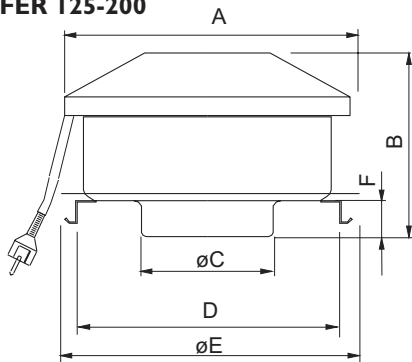
To protect the motors from overheating, the TFER 125 M motor is impedance-protected, while the TFER 125 XL has an integral thermal contact with automatic reset.

These fans are suitable for exhaust-air ventilation systems in single and multiple dwellings, offices and day nurseries.

Tip

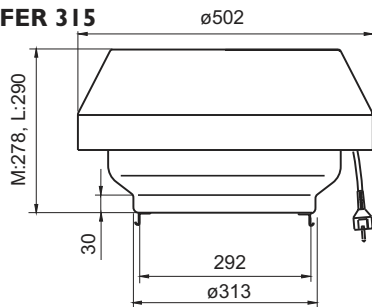
Perfect fan for polluted extract air, for example toilets, small bistros etc.

TFER 125-200



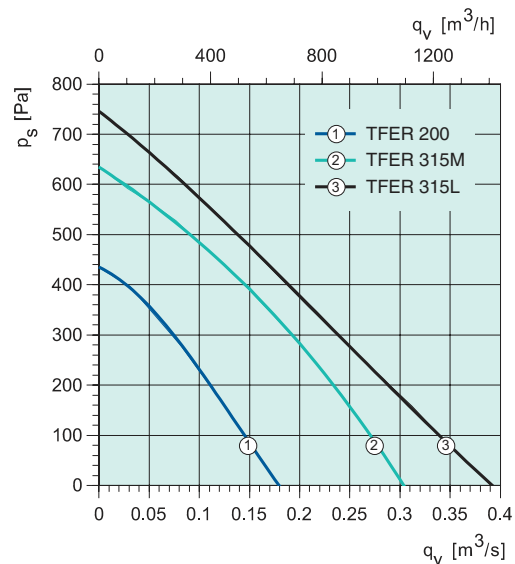
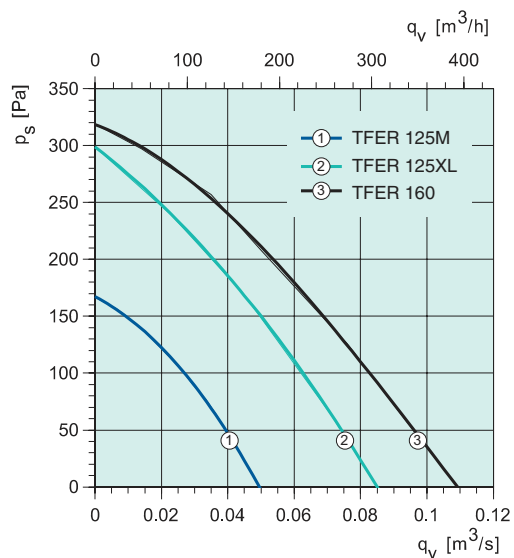
TFER	A	B	øC	D	øE	F
125M	242	178	124	237	-	30
125XL	284	187	124	237	332	20
160	334	197	158	287	380	28
200	402	181	198	287	470	300

TFER 315

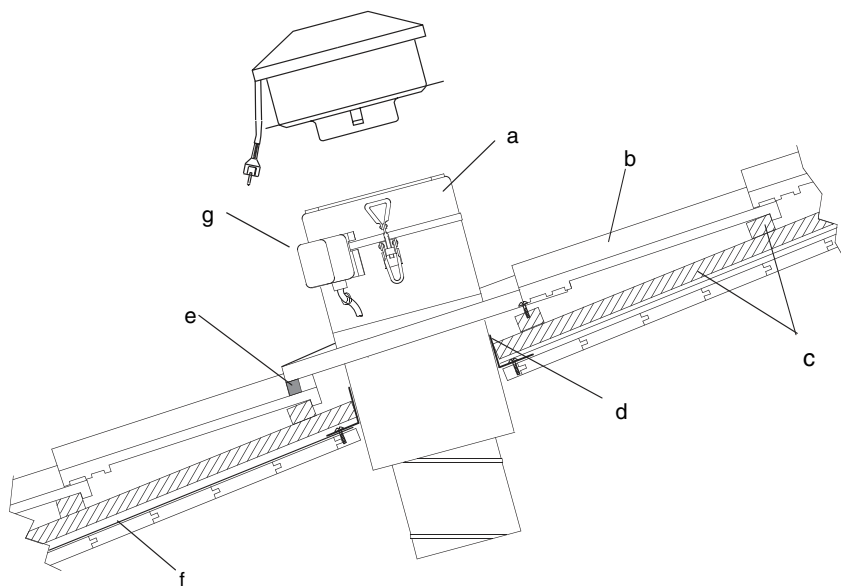


TFER		125M	125XL	160	200	315M	315L
Voltage/Frequency	V/50 Hz	230~	230~	230~	230~	230~	230~
Power	W	32	80	77	109	198	306
Current	A	0.19	0.35	0.34	0.48	0.88	1.34
Maximum air flow	m ³ /h	175	305	395	645	1080	1405
R.p.m	min ⁻¹	2435	2310	2350	2550	2595	2300
Max temp. of transported air	°C	60	70	70	70	55	40
Sound pressure level at 4/10 m*	dB(A)	24/16	34/26	31/23	36/28	51/43	54/46
Weight	kg	2.5	3.5	4	5.5	7.5	9
Enclosure class, motor	IP	44	44	44	44	44	44
Capacitor	µF	-	2	2	3	5	7

* L_{WA}-23/31 dB(A) = L_{pA} at free field and 4/10 m distance to the fan. (L_{WA} = Sound power level, L_{pA} = Sound pressure level)



How to install TFER



- a. TOB/TOS roof curb
- b. Roof cladding
- c. Batten
- d. TUB lower plate
- e. Sealing tape
- f. Roofing felt
- g. Connection box

Speed controllers

	Transformer	Thyristor
TFER 125M-315M	RE 1.5/REU 1.5	REE1
TFER 315L	RE 1.5/REU 1.5	REE2

No need for external motor protection.

Other accessories, page 50.